

Transitioning From ProTA Classic

A Supplement to the ProTA User Manual

BeeSoft

© 2007, BeeSoft

Contents

Getting Started	3
Upgrading: Step By Step	4
New Features Overview	11

Getting Started

About This Manual

This manual is a supplement to the **ProTA User Manual**. You should read this manual if you are upgrading from a Classic (OS9) version of ProTA or ProTA Gold. This manual will walk you through the Upgrading process and provide a brief overview of the features that are new to the OS X version.

Throughout this manual, the term ProTA refers to either ProTA or ProTA Gold software. ProTA users should note however that **Custom Indicators, Trading Systems, Database Scanning** and the **Gold Language** are features only present in the ProTA Gold version of the software.

Tip. You can access this manual as well as the complete **ProTA User Manual** from within ProTA by clicking the **Help** menu in the menubar.

Where to Begin?

The first step is to install ProTA for OS X on your hard drive. Please see the **Getting Started** chapter of the **ProTA User Manual** for step-by-step installation instructions.

Once installed:

- If you would like to copy your ProTA Classic database into the new OS X database, proceed to the next chapter **Upgrading: Step By Step**.
- If you are not upgrading any Classic files, but would like an overview of the new OS X features, skip ahead to the final chapter **New Features Overview**.

Upgrading: Step By Step

Overview

This chapter covers the process of copying and upgrading data files from an older ProTA Classic database into the new ProTA OS X database.

- “ProTA Classic” refers to any OS 9 version of ProTA or ProTA Gold, version 2.34 or lower. “ProTA for OS X” refers to any OS X native version of ProTA or ProTA Gold, version 3.0 or higher.
- The Upgrading process makes a copy of each ProTA Classic file and then upgrades the copy to the new OS X file format. Your Classic database will be left intact.
- You cannot drag ProTA Classic files directly into the OS X database – they will not be readable by the OS X program. The only way to bring your Classic data files into the OS X database is via the Upgrade process described in this chapter.

Note. ProTA OS X files are not backward compatible with the ProTA Classic application. If you intend to continue working with ProTA Classic in tandem with ProTA for OS X, you will need to maintain two databases in tandem: your existing Classic database as well as the new OS X database.

Requirements

To Upgrade ProTA Classic data files, you will need:

- ProTA for OS X already installed on your hard drive. Please see the **Getting Started** chapter of the **ProTA User Manual** for step-by-step installation instructions.
- A Classic ProTA installation. The old/Classic ProTA folder must be intact, as it was installed/used by the ProTA Classic program.

Step By Step

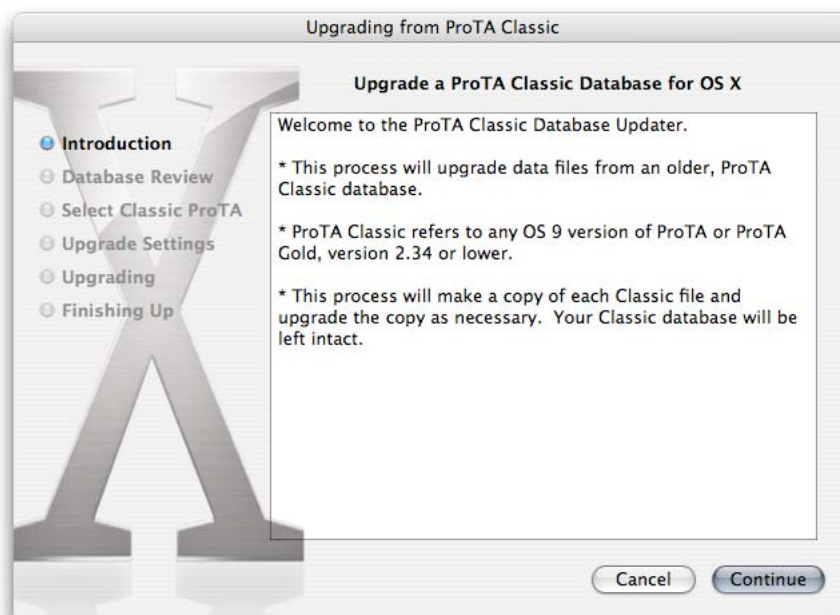
Initiating the Upgrade Process

- If you are not already viewing the Welcome window, choose **ProTA Welcome and Registration** from the application menu in the menubar.



- Click the Upgrade button.

Introduction

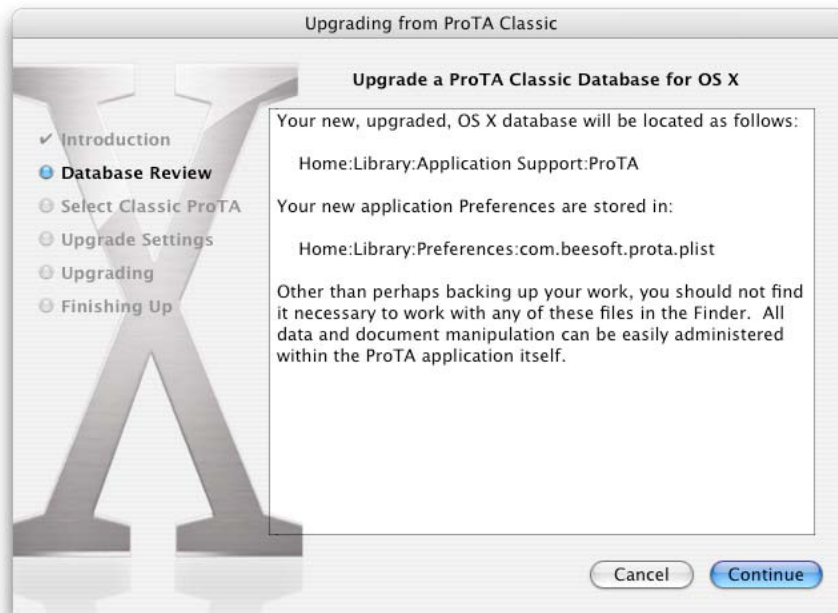


- If at any time, you'd like to terminate the upgrading process and return to the Welcome window, click **Cancel**.
- Otherwise, click **Continue**.

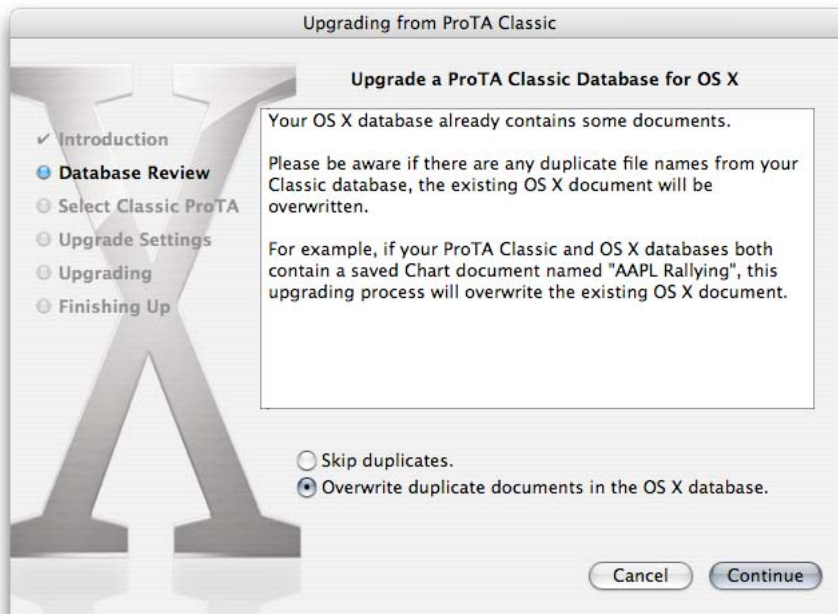
Database Review

Next, ProTA will scan for an existing OS X database.

If this is a brand new OS X installation, you'll see the following window which provides information about where the OS X database is installed:



If you already have some files in your OS X database, you will instead see the following window:

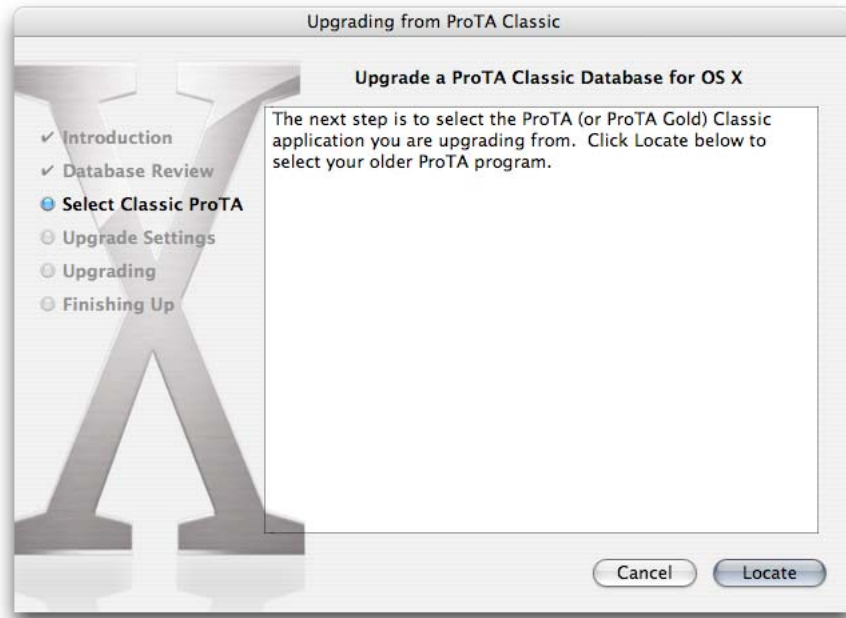


Skip duplicates. Choose this to skip upgrading any files that already exist in your OS X database. For example, if your ProTA Classic and OS X databases both contain a saved Portfolio named "Hot Stocks", the upgrade tool will skip this file and the OS X document will remain as-is.

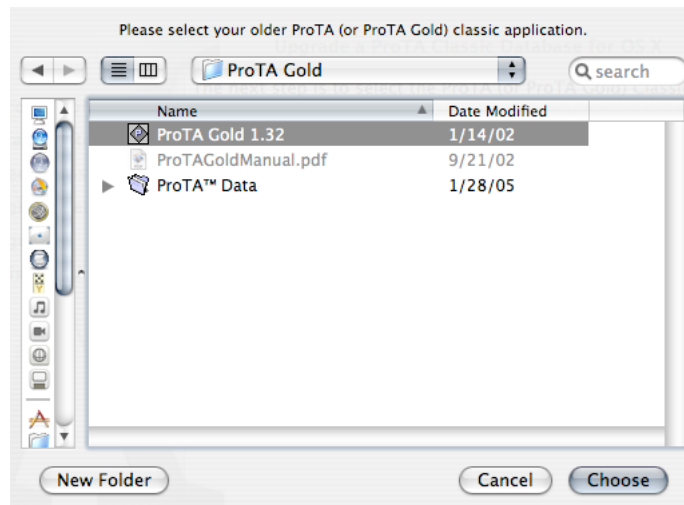
Overwrite duplicate documents in the OS X database. Choose this to upgrade every file in the Classic database, even if it already exists in your OS X database. For example, if your ProTA Classic and OS X databases both contain a saved Portfolio named "Hot

Stocks”, the upgrade tool will overwrite the existing OS X document with an upgraded copy of the Classic file.

Select Classic ProTA

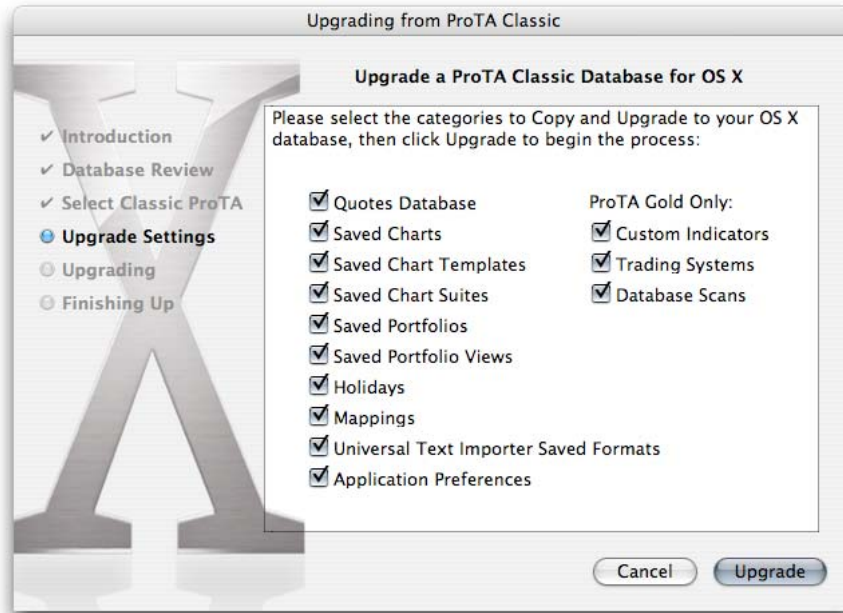


- Click **Locate**.



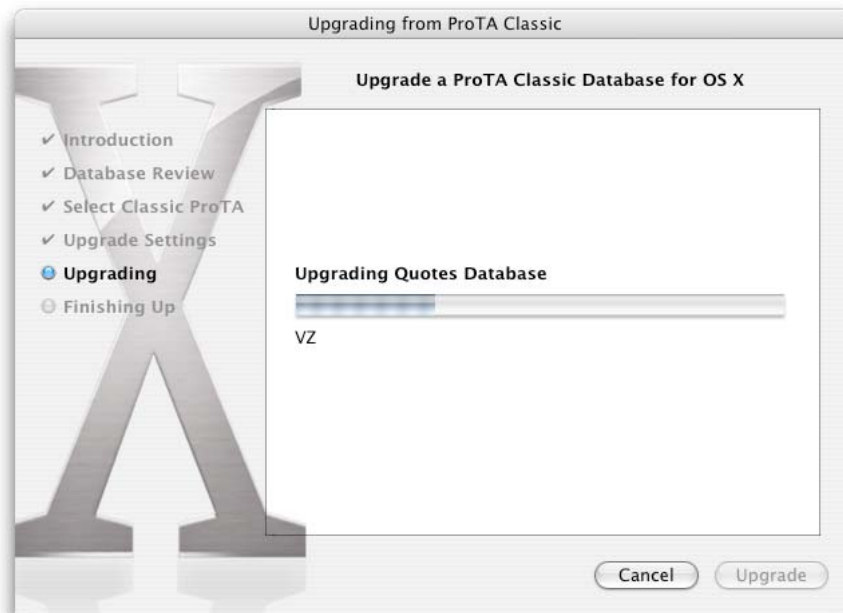
- Navigate to your older ProTA or ProTA Gold Classic application, highlight it, then click **Choose**.

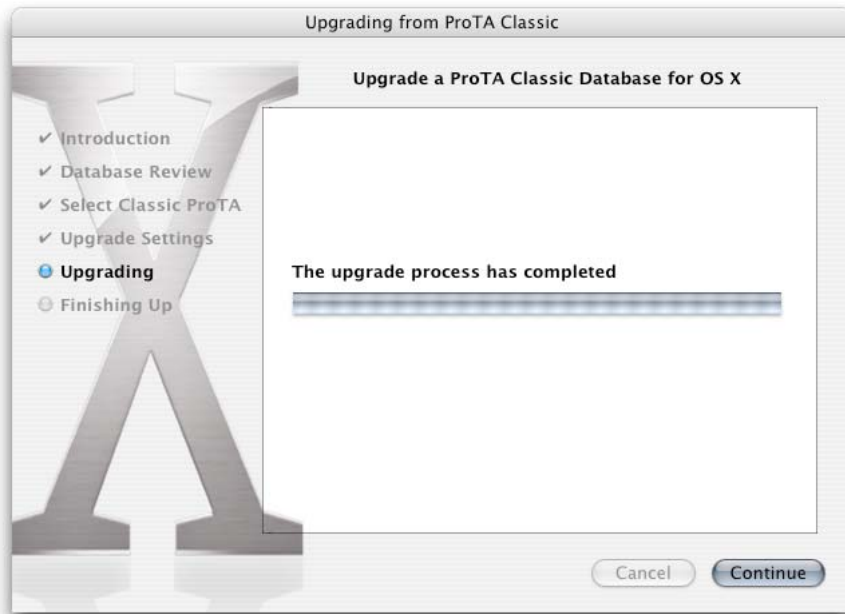
Upgrade Settings



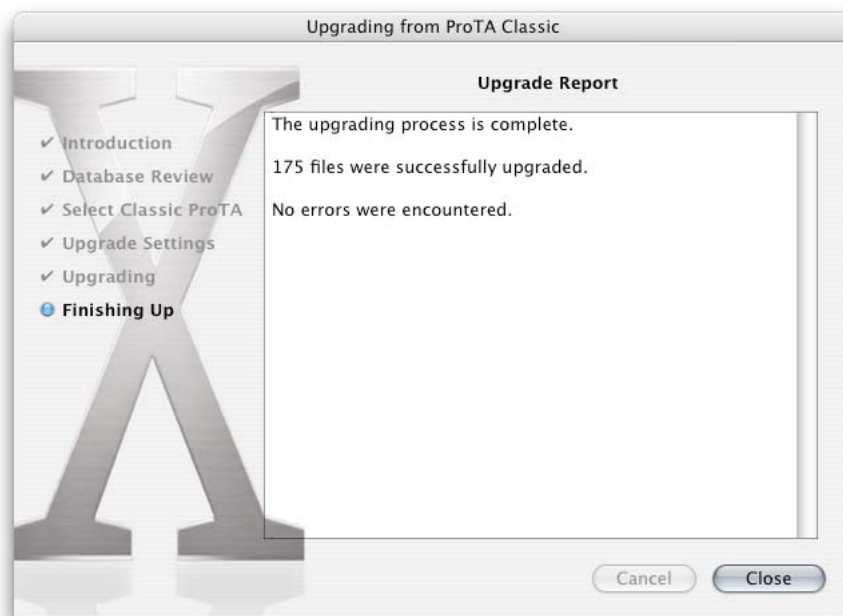
- Check the box for each category of file you'd like to copy and upgrade into the OS X database. Generally, you will want to leave all of the boxes checked.
- Click **Upgrade** to begin the Upgrading processing.

Upgrading





Finishing Up



Upon completion, you'll see a summary of upgrade results. Click **Close** when done.

Your ProTA Classic database is left untouched and your ProTA OS X database now contains native files, upgraded from ProTA Classic.

ProTA OS X Database

ProTA for OS X stores all of your files in a folder named ProTA at the following location:

~/Library/Application Support/ProTA

The ~ in the above file paths represents your OS X Home folder. The path to your Home folder is <Your Startup Disk>/Users.

Note. ProTA places your data files in specific locations within the ProTA folder structure. It is important that you do not rename or relocate any of the files or folders residing in the ProTA folder. All file maintenance can be easily administered from within the program.

Note. In some cases, the Classic data format is not a perfect match for the new OS X approach to the same feature. Please see the next chapter for an overview of changes you should expect.

New Features Overview

Overview

ProTA for OS X builds upon and extends the ProTA Classic approach to technical analysis. From a developer's standpoint, nothing was carried forward from Classic to OS X. This provided an opportunity to re-design the interfaces and simplify many of the workflows within the application. You'll find the same powerful tools organized into a more streamlined interface. New features and additions to the Gold Language will increase your productivity and provide new avenues for analysis. Under the hood, a new multi-tasking data model and optimized computational engine deliver a much higher level of performance.

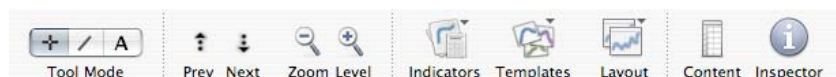
This chapter very briefly discusses some of the more significant differences between ProTA Classic and OS X. Given that ProTA for OS X is essentially a brand new program, a full review of the brand new **ProTA User Manual** is also highly recommended.

ProTA Workspace

ProTA for OS X was designed to conform with Apple's Human Interface Guidelines for OS X. As such, you'll notice some overall workspace changes right away.

Toolbar Commands

The OS 9 style toolbar (previously at the left of the screen) has been replaced with a combination of OS X friendly tool palettes and in-window toolbars. For example, here is the toolbar located at the top of each chart suite window:

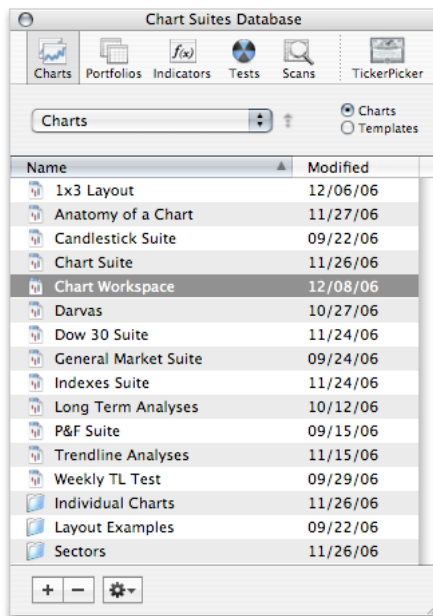


This OS X toolbar contains many of the same commands and features previous located in the Classic charting toolbar. Portfolio and Quote windows have similar toolbars at the top of each window providing the same functions offered in Classic.

TickerPicker and File Access

The TickerPicker and all of your saved work is now accessible via a new floating tool window called the File Browser.

Following is an example of the File Browser displaying all saved Chart Suite documents:

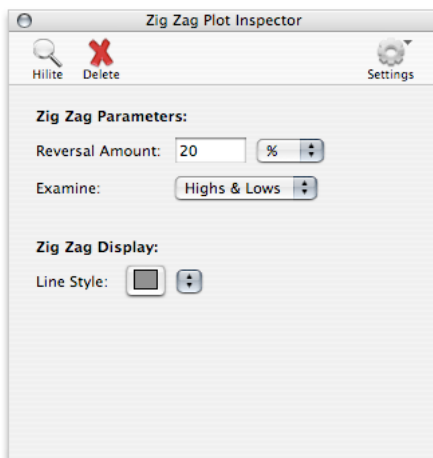


Click the **TickerPicker** icon at the right to access your ticker and quotes database.

It is recommended the File Browser window remain open at all times for maximum productivity and minimum mouse-clicking.

Inspector

The Inspector is the second floating tool window in ProTA for OS X. It replaces all of the modal dialog boxes in Classic, dynamically displaying the customizable settings for the selected object in a chart.



Click any item in a chart to view and edit its parameters and display style. Your edits are reflected immediately in the associated chart.

It is recommended this window remain open at all times for maximum productivity and minimum mouse-clicking.

Window Arrangement

The program initially defaults to a window arrangement aimed at maximum productivity:



1. **File Browser.** A persistent floating tool window that provides access to and administrative duties for all of the files in your ProTA database.
2. **Inspector.** A persistent floating tool window that provides feedback and dynamic editing for the selected element within any chart.
3. **Work Area.** The remaining screen space is reserved for working with ProTA's non-floating windows and documents such as Chart Suites and Portfolios.

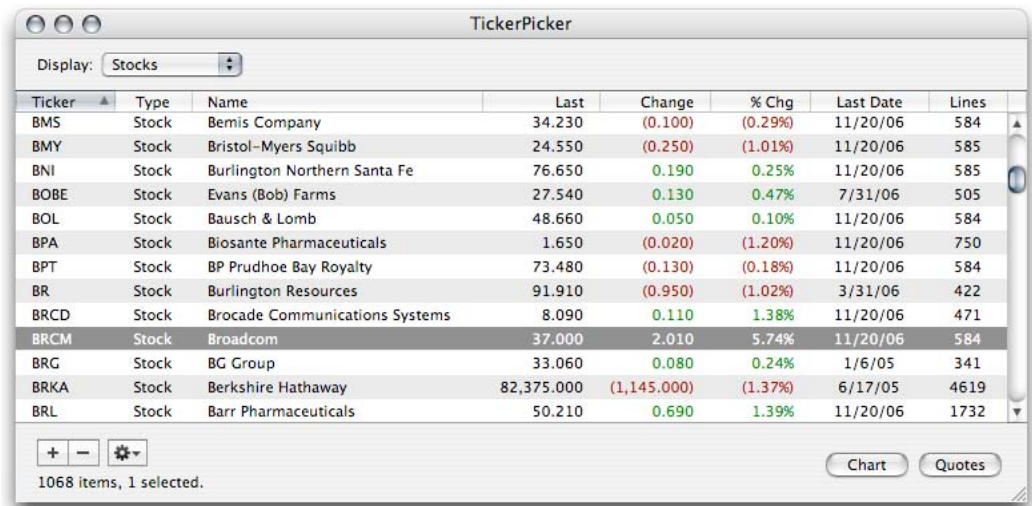
The **File Browser** and **Inspector** windows are unique in that they are the only floating windows in the program and they are intended to remain open at all times in a relatively fixed location.

Please see the **Getting Started** chapter in the **ProTA User Manual** for a more complete introduction.

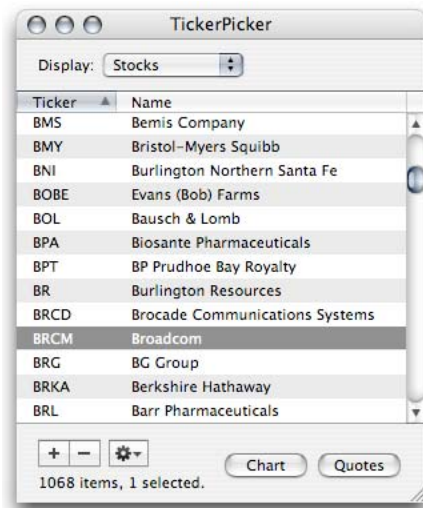
TickerPicker

Your ProTA Classic TickerPicker and Quotes Database will be automatically upgraded to the new OS X format.

The TickerPicker continues to provide fast access to any security in your database. You'll find it even more useful in ProTA for OS X.



- Add and remove securities directly from within the TickerPicker window.
- The edit text field from Classic is gone. Instead, just start typing a ticker symbol to select it in the list.
- Six additional columns of information are available. If you prefer Classic's compact TickerPicker, you can re-arrange the columns by dragging and/or resize the window:

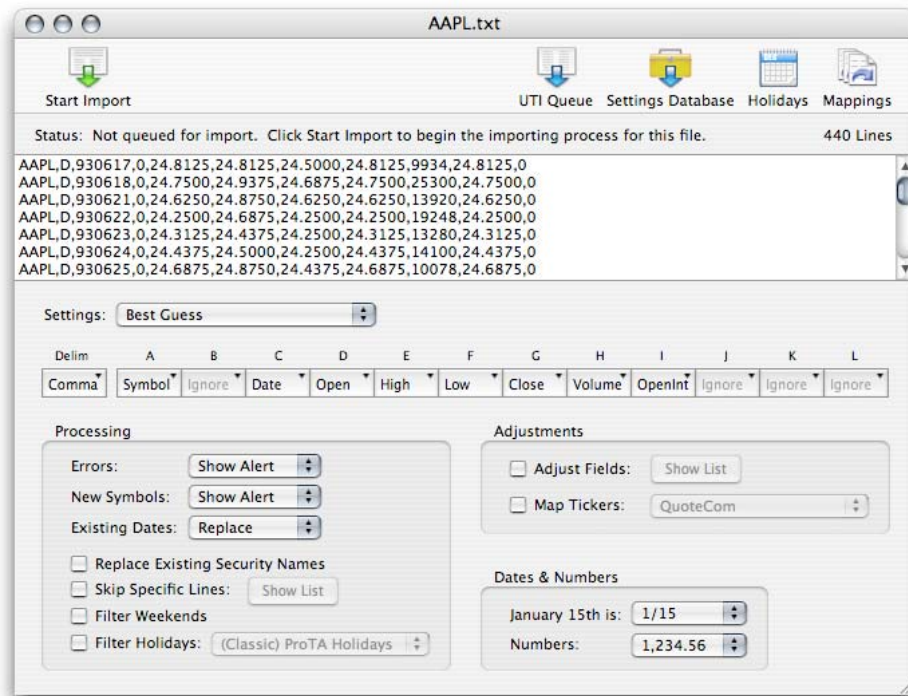


Please see the **Quotes Database** chapter in the **ProTA User Manual** for additional details.

Universal Text Importer

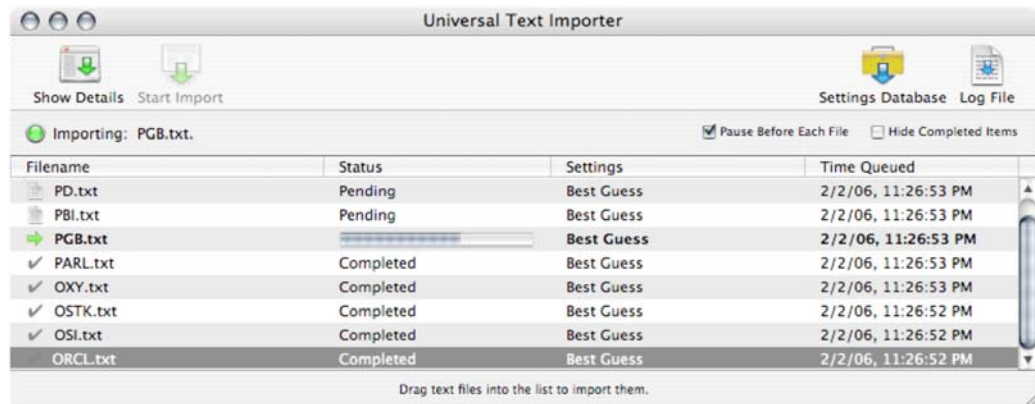
Individual File Imports

Importing individual text files is still a simple matter of dragging and dropping onto the ProTA icon. A new interface allows you to configure all importing specifications within a single window.



- A new option "Replace Existing Security Names" allows you to update the names of existing securities in your database.
- A new option "Skip Specific Lines" allows you to filter out data lines that are not intended for parsing/importing.
- A new "Adjust Fields" setting allows you to translate the source data, as it is imported, to a magnitude consistent with your existing database (for example 3rd party Volume figures in hundreds vs. raw Volume).
- * Many options that were limited to a global preference setting can now be configured for each individual import. For example, all of the options shown above can now be customized on a per-vendor and/or per-import basis.

Batch File Imports

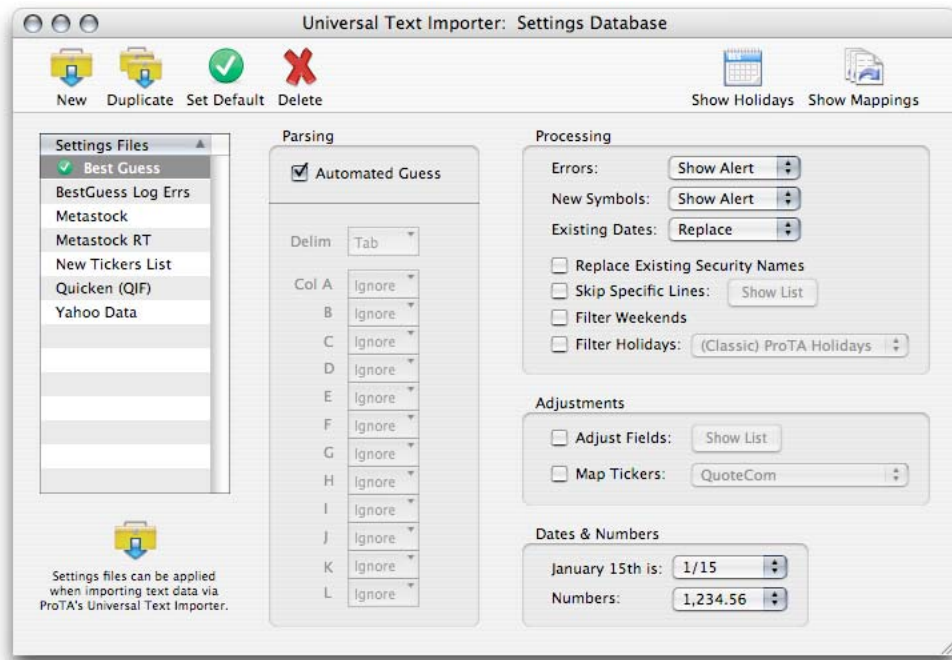


The new UTI Queue window supports batch processing of an unlimited number of source files. The queue is particularly useful when importing large batches of downloaded

historical data files or perhaps from a data CD-ROM, both available from many online data vendors.

UTI Settings Database

The new UTI Settings Database allows you to administer settings/formats for the various sources from which you obtain data.



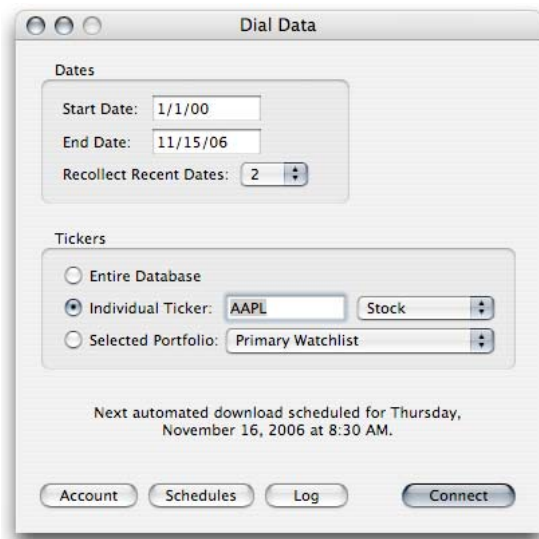
- Create a unique Settings File for each import scenario you encounter. Then when you import a text file, simply choose a Setting from a popup menu.
- Assign one of the Settings Files as your Default so all new imports initialize with reliable, preferred settings.
- Your ProTA Classic UTI Format Settings will be automatically upgraded into the new OS X Settings Database.

Other UTI Improvements

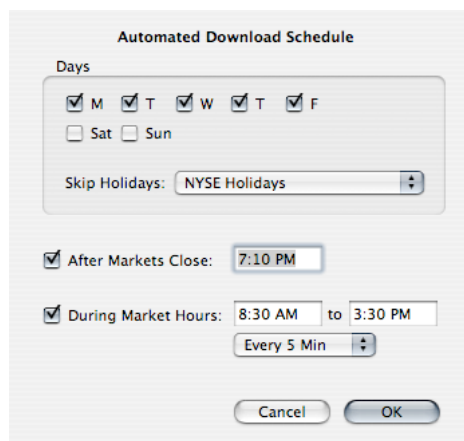
- A cumulative log file is now maintained detailing every import you've recently performed.
- Up to 5 "pragmas" can be specified at the beginning of any source file. Pragmas describe the format of the data that will follow. If your source files include accurate pragmas, you can be 100% assured the UTI will import the file properly without having to review/preview any settings. Supported pragmas include Delim, Fields, Dates, Numbers and Settings.

Please see the **Universal Text Importer** chapter in the **ProTA User Manual** for additional details.

Dial Data



- Recollecting existing data points has been expanded for up to a full week.
- The 16,000 record per-download limit has been removed. I don't have an official maximum value from Dial Data, but I have been successfully downloading hundreds of thousands of data points in a single session.
- Under the hood, a new networking engine provides much more reliable and faster connections.



- Fully automated intraday data updates are now supported in addition to the end-of day collection. ProTA's data model is still based on Daily data, but we can now obtain today's current intraday data periodically throughout the trading day. You can use your existing Dial Data account as-is, with no additional cost. View charts, portfolios, and other custom analysis updated in real-time with current market data (15 minute delay, USA stocks only).

Please see the **Dial Data** chapter in the **ProTA User Manual** for additional details.

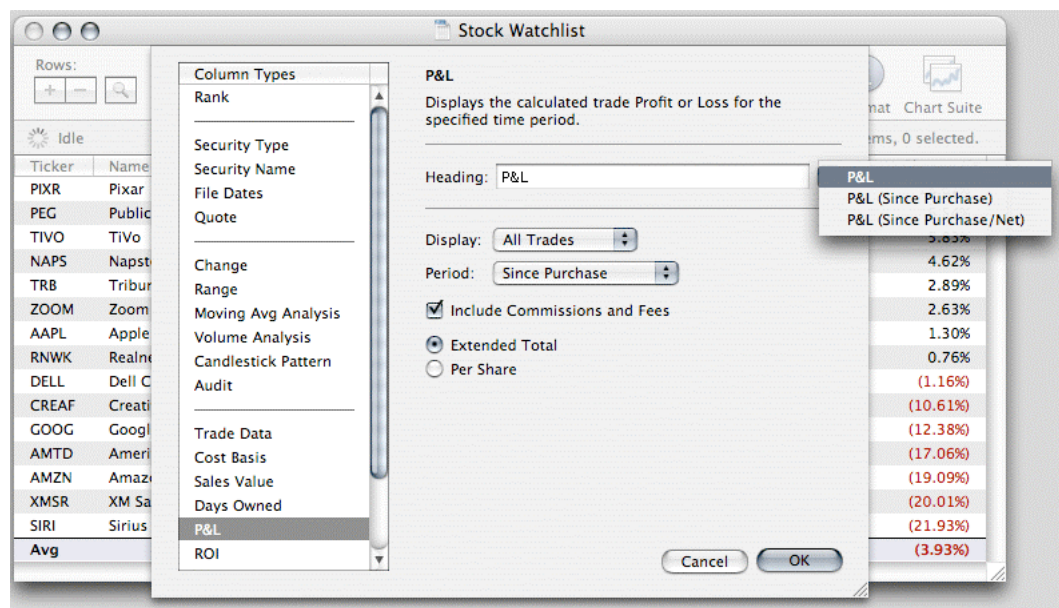
Portfolios

Your ProTA Classic Portfolios will be automatically upgraded to the improved OS X format.

Stock Watchlist window showing a table of stock data. The table has 8 columns: Ticker, Name, Last Date, Close, Change, Change %, % From YTD High, and YTD Change %.

Ticker	Name	Last Date	Close	Change	Change %	% From YTD High	YTD Change %
RNWK	Realnetworks	11/10/06	11.370	-0.010	(0.09%)	5.17%	43.95%
HPQ	Hewlett-Packard	11/10/06	39.990	0.430	1.09%	0.27%	39.29%
NAPS	Napster	11/10/06	4.480	-0.020	(0.44%)	12.16%	28.61%
AAPL	Apple Computer	11/10/06	83.120	-0.220	(0.26%)	3.80%	18.04%
TIVO	TiVo	11/10/06	5.820	0.000	0.00%	38.67%	13.59%
GOOG	Google	11/10/06	473.550	0.920	0.19%	3.74%	13.54%
MSFT	Microsoft	11/10/06	29.240	-0.020	(0.07%)	0.54%	11.51%
DELL	Dell Computer	11/10/06	24.890	-0.090	(0.36%)	22.80%	(17.19%)
AMZN	Amazon.com	11/10/06	39.260	0.420	1.08%	19.18%	(18.73%)
CREAF	Creative Technology	11/10/06	6.920	-0.040	(0.57%)	25.99%	(19.72%)
AMTD	Ameritrade Holding	11/10/06	16.420	0.270	1.67%	37.73%	(32.19%)
SIRI	Sirius Satellite Radio	11/10/06	4.130	-0.160	(3.73%)	39.44%	(36.30%)
XMSR	XM Satellite Radio Holdings	11/10/06	13.200	-0.420	(3.08%)	56.66%	(51.27%)
Avg			57.876	0.082	(0.35%)	20.47%	(0.53%)

- A new multi-threaded computational engine provides faster recalculations while the window remains responsive to your actions and commands. Edit columns, add rows, view charts etc. while extra-large portfolios re-compute cells in the background.
- Size limits have been removed.



- Administer all column types in a new simplified window.

- Column headings can be easily customized, with several default suggestions available via a new popup menu.

- The Total and Average Rows can now be displayed together or independently.
- For data types that are not built-into ProTA, you can now specify up to 6 custom numerical fields and 2 custom text fields per row in any portfolio.

	Purchase	Sale
Date:	8/8/06	11/8/06
Price per Share:	65.25	81.625
Commission:	9.95	9.95
Other Fees:	0	0
Extended Total:	\$6534.95	\$8152.55

- Trade data has been expanded to include transaction “Other Fees” as well as the 6 custom numerical fields and 2 custom text fields.

Portfolio Suites

Each Portfolio window now maintains a persistent, associated suite of charts for each item in the Portfolio.

- Click the Chart Suite button in the Portfolio’s toolbar to view the associated Suite of charts.
- Any edits, formatting, analyses applied to the charts in the Portfolio Suite are now saved along with the Portfolio

Please see the **Portfolios** chapter in the **ProTA User Manual** for additional details.

Charting

More than any other feature, charting has received the most significant upgrade in the transition to OS X. You'll find expanded options in nearly every charting feature, and in fact the overall approach to viewing charts has changed.

Given the scope of changes compared to Classic ProTA, we will not provide a feature-by-feature analysis in this manual. Rather, it is strongly recommended you read the **Charts** chapter in the **ProTA User Manual**.

If you are upgrading files from Classic, you'll want to review each upgraded chart and chart suite file closely. Not every Classic feature is exactly mirrored in OS X, so there will be some minor differences vs. Classic. It is best to treat the upgraded charts as a starting point towards working with the new features and workflows available in ProTA for OS X.

Following are some of the important changes to note if you are upgrading Classic chart files:

- In OS X, each chart document has the capacity to hold an unlimited number of charts. In fact, **all** chart documents are now Chart Suite documents.

Your Classic ProTA chart files will upgrade to a new OS X chart suite document with exactly one item in the Content listing. You are free to continue working the old way, where each individual chart can be saved to a separate file on disk, but I think you'll find that grouping related charts into a single document window provides many advantages: fast random access to all charts in the group, the ability to batch edit the group, the ability to compare and synchronize several charts side-by-side, and more.

- OS X Chart Suites are self-contained within a single window. In most cases, it is possible to upgrade your Classic chart suites to closely resemble their original layout. In some cases however, it is simply not possible to perfectly mimic Classic's individual window arrangements.
- ProTA Classic used the deprecated Quickdraw technology to render chart elements. ProTA now uses the OS X Quartz graphics engine for superior anti-aliased graphics. In conjunction with this change, the dotted line style has been removed and is replaced with semi-transparent, blended lines. Your Classic files are automatically updated to the best possible match.
- Upgraded chart files default to display the full OS X toolbar at the top of the window. You can click the chicklet in the upper right of any Chart Suite window title bar to cycle the toolbar sizes/modes.
- Upgraded chart files default to a hidden Content list, while upgraded Suites default to a visible Content list. You can toggle between both modes by clicking the Content icon in the toolbar.
- By default, ProTA for OS X is defaulting to white-background charts. Your Classic chart files are upgraded with colors intact, so if you used black-background charts in Classic, they will upgrade to black background in OS X. If you then want all **new** charts to also have a black background, create a Template from a black background chart and then select that Template as your default in the Preferences window.
- Point & Figure charting is now enabled and configured in the Time (X) Axis window.

Please see the **Charts** chapter in the **ProTA User Manual** for additional details.

Gold Language

New Syntax

The OS X Gold Language differs from Classic in two important ways:

Assignment vs. Comparison

In Classic, we used operator = to indicate both assignment to a variable as well as for comparisons between two values. In OS X, comparisons continue to use = but assignment is now done with := so for example:

```
myVariable := Close + 10;
```

```
IF ( myVariable = 25, TRUE, FALSE );
```

This new differentiation helps to make complex formulas easier to read as the intent is now explicit. Another benefit is that you can now inter-mix the order of parameter lines and variable lines.

Line Terminations

Each line of code is now terminated with a semicolon - see above for two example lines of code. Whitespace including spaces, tabs, Returns, Line Breaks can now be ignored.

Benefits include:

- Improved readability/intent especially when formulas include long lines of code.
- When sharing formulas as text in emails, on web pages, etc. the random insertion of Returns and Line Breaks will no longer break the code.
- With tabs and line breaks ignored, you can now format your code with indentations and line breaks even within a line of code.

Note. All of your Classic Custom Indicators, Trading Systems and Database Scanning criteria will be automated upgraded to reflect the OS X syntax changes.

New Functions

ALERT(Expression, Period)

Returns TRUE when Expression is TRUE and also extends the TRUE result Period bars forward. An example:

ALERT(Volume > 10000, 3) returns TRUE when the Volume is greater than 10000 and also TRUE for the following 2 bars even if Volume was not greater than 10000 on the 2 subsequent days.

ALERT is particularly useful when you want to test for a valid or true condition over a period of time.

VALUEWHEN(LookbackCount, Expression, OutputArray)

Returns the value from OutputArray when Expression was last TRUE looking back in time for LookbackCount occurrences of Expression. An example:

VALUEWHEN(1, Volume > 10000, Close) returns the Closing price the last time Volume was greater than 10000.

PREV()

Returns the previous value of the current line of computation. In Classic ProTA Gold, self-reference was not possible which made some analytics difficult or in some cases impossible to code in the Gold Language. PREV provides self-reference as well as basic looping logic when used with other functions. A simple example:

PREV() + 1 returns a value of 1 on the first date, then 2 on the second date, 3 on the third, etc.

Note. PREV() is extremely slow and should be used sparingly, as a last resort.

New Plotting Options

You can now plot multiple lines in a single indicator by prefixing any variable line with the # character. For example, this will plot three lines: two lines above and below a moving average line:

```
MAPeriod: 21;  
ShiftPercent: 10;  
  
BaseLine := MA(MAPeriod);  
  
ShiftAmt := BaseLine * ShiftPercent / 100;  
  
#UBand := BaseLine + ShiftAmt;  
#LBand := BaseLine - ShiftAmt;  
#MALine := BaseLine;
```

New Reserved Keywords

The following words can no longer be used as Parameter or Variable names:

```
PlusDI  
MinusDi  
Percent  
Alert  
ValueWhen  
Prev  
Previous
```

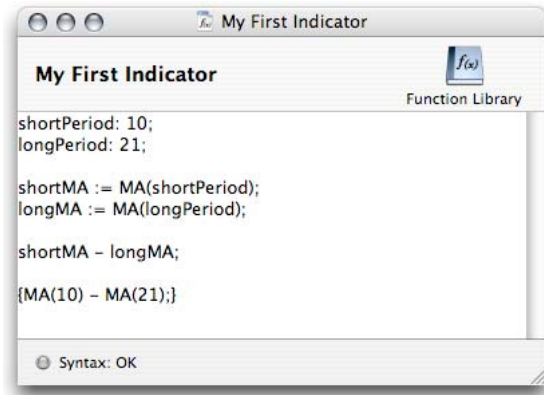
The Upgrade process does **not** attempt to edit your formulas in the event you had used one of the above in your formulas.

Please carefully review your upgraded Custom Indicators and Trading System formulas for new syntax errors that might result based on these new reserved words.

Please see the **Gold Language** chapter in the **ProTA User Manual** for additional details.

Custom Indicators

Your ProTA Classic Custom Indicators will be automatically upgraded to the new OS X format.



- Syntax checking is now performed on-the-fly as you type.
- When an error condition is noted at the bottom of the window, you can click the error message to see the offending code highlighted in the window.

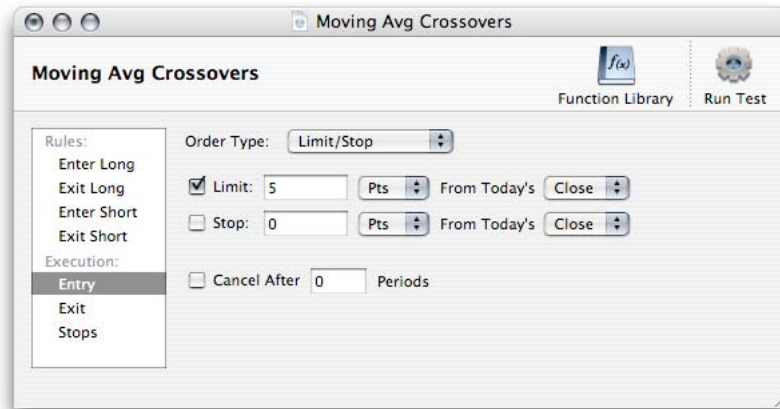


- You can now password protect your Custom Indicator formulas.

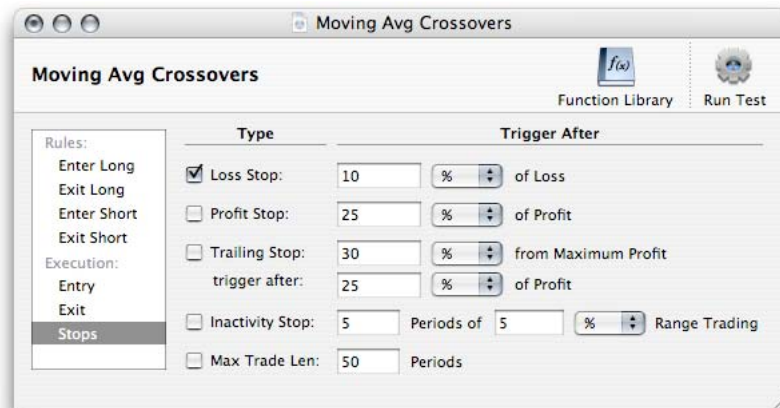
Please see the **Custom Indicators** chapter in the **ProTA User Manual** for additional details.

Trading Systems

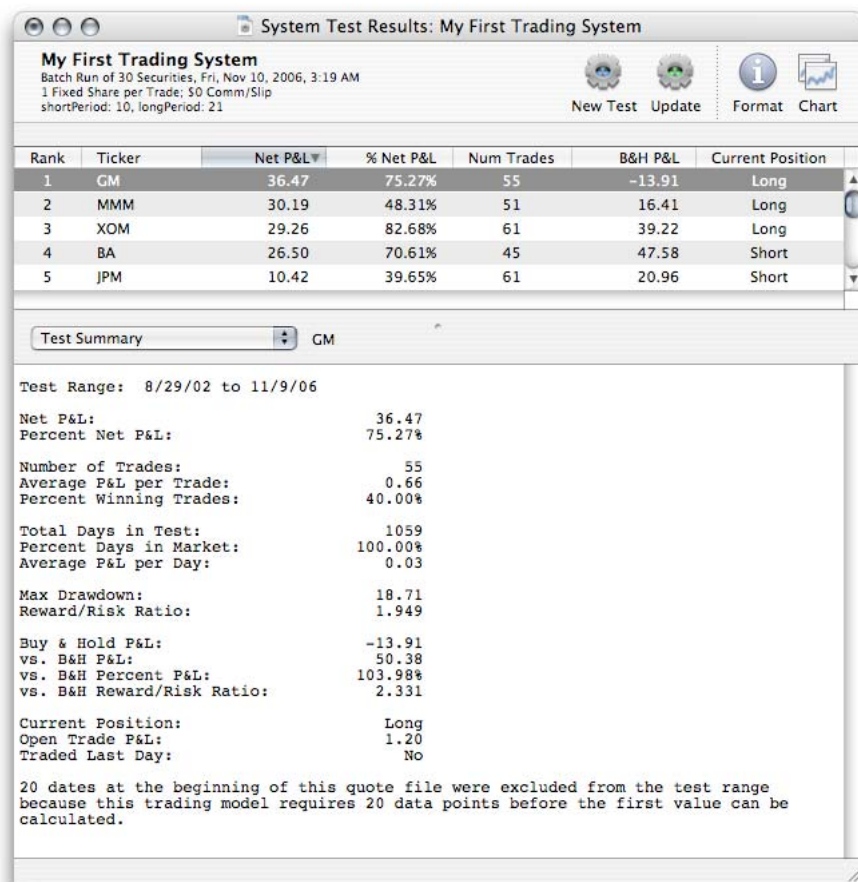
Your ProTA Classic Trading Systems will be automatically upgraded to the new OS X format. System Test Result files are not upgraded. You will need to re-run your tests with the new program.



- You can now specify Entry and Exit Executions separately. For example, you might choose to enter trades at the triggered Market price, but use a combination of Limits and Stops that straddle the Exit trigger to possibly scalp out a little bit of extra profit.
- Market orders continue to execute as in Classic, but the Limit and Stop orders have been combined. You can continue to choose either/or by checking a single box, but I think you'll find most of those trading models better served with both a Stop and Limit order straddling the trigger price.



- A new Stops setting, Max Trade Len makes it easy to limit the duration of any trade. Setting this new stop to a small value as low as 1 can be especially useful to discover market reactions directly after a specified condition has taken place.



The results table is much easier to administer in OS X. Resize and drag and drop columns, new number formatting options, export the table to Excel or text via Copy/Paste.

Update and New Test

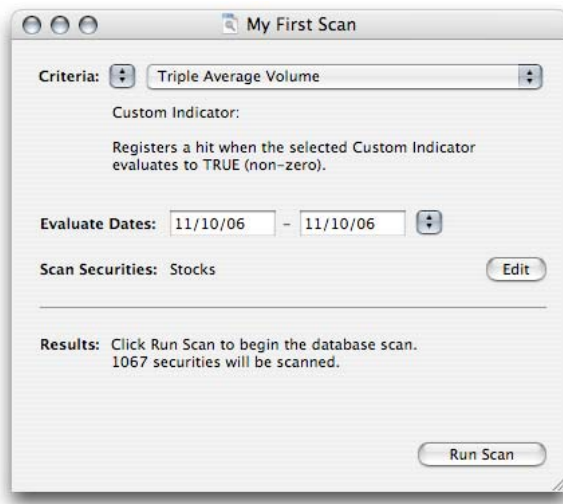
- Update re-runs the test as it was originally specified, for example when new market data has been downloaded to your database.
- New Test brings up a System Test Specifications window with a clone of this test's settings, for example to run a new test with similar but slightly edited settings.

Please see the **Trading Systems** chapter in the **ProTA User Manual** for additional details.

Database Scanning

In OS X, all Database Scanning criteria/formulas are now saved as simple Custom Indicators. The File Browser for Custom Indicators contains a folder named "Criteria". Though optional, it is recommended you save all newly created Database Scanning criteria formulas into this Criteria folder.

Note. Your ProTA Classic Database Scan criteria will be automatically upgraded to the new OS X format. Per above, they will be converted to Custom Indicator files and placed in the Criteria folder, described above.



- The Criteria popup menus allow you to choose existing Custom Indicators or Trading Systems as scanning criteria. The above window is configured to scan for any Stocks that meet my Triple Average Volume custom criteria.
- Results of the scan are now stored and retained in the Database Scan document.
- A range of evaluation dates can now be specified. The scanner will consider the Criteria matched or 'hit' if the specified Criteria is true for any date in the specified range.

Please see the **Database Scanning** chapter in the **ProTA User Manual** for additional details.

Preferences

Most Preferences for the OS X program are brand new. Only the global Dates and Numbers preferences from Classic are carried forward to OS X in the upgrade process.

Please note:

- UTI Preferences are now administered in the UTI Settings Database.
- Preferences/Settings for specific chart elements such as the Chart Body, X Axis, Y Axis have been moved into their own respective Settings databases located in their Inspector window.
- A new command under the Windows menu, "Save Window As Default", allows you to save the current window's dimensions and key internal settings as a default for all new windows. You'll find this especially handy for Chart Suite, Dial Data, Trading System, Database Scan and System Test windows.

Please see the **Preferences** chapter in the **ProTA User Manual** for additional details.

Technical FAQ's

Why are some indicator values inconsistent with ProTA Classic?

There are computational differences in almost every indicator. The differences fall into one of two categories:

1. In some cases (listed below), ProTA Classic was simply wrong or non-standard and the OS X version reflects the correction.
2. In most cases, there will be a very small difference of less than 1-2%. These differences are caused by the increased level of precision in the OS X version, Classic ProTA used a 32-bit fixed decimal system. The advantage was great speed on any hardware. The disadvantage was a lot of rounding taking place at 4 or 5 decimal places throughout each stage of each calculation. For OS X, 64-bit doubles are used throughout. The advantage is much higher precision and with modern processors (G4, G5, Intel), the performance is actually higher.

Explicit Changes vs. Classic:

- MFI used Median Price as a basis and now uses Typical Price.
- Accumulation/Distribution computation starts one bar sooner and Periods > 1 now work properly.
- CCI did not skip zeros in one of the internal MA calcs (rare issue).
- EaseOfMovement was just plain wrong in Classic (sorry folks).
- ChaikenOscillator is based on Accumulation/Distribution so see above.
- Performance had incorrect information reported in the pane heading.
- McClellanOscillator/Summation Index now begins its calculation after the Period number of bars.
- PriceVolumeTrend, Force Index, Exchange Up/Down Volume were particularly susceptible to fixed math rounding so the differences are larger than 1%.
- For Periodicities > Daily, the Volume field is now an average for the week/month/etc. vs. a summation.

Why does my OS X Database use more hard drive space?

ProTA Classic used 32-bit integer records. ProTA for OS X uses 64 bit floating point records. Benefits include:

- Removal of Classic's 12,400 price limit. Virtually no limit to the Price, Volume, or computed values throughout the program.
- Faster access and computational speeds as the entire program works consistently with 64 bit doubles throughout. No int/float conversions, and modern processors (G4/G5/Intel) perform floating point math very, very quickly.

Were any Classic features dropped in the OS X transition?

- The Fibonacci table and Swings analysis window are gone. The File Library at www.beesoft.net has an Excel spreadsheet that mirrors the old Fibonacci table. Swings analysis was essentially a ZigZag plot which can be added to any chart in OS X.

- The V-Band cursor tool currently does not extend into other charts, only the current chart. This will be revised to work more like Classic at some point in the future.
- The Zoom-in chart cursor is gone. But we now have live scrolling and 100 levels of zoom resulting in more control over zoom state vs. Classic.
- Other than Batch Processing Exports from your Quotes Database, the Export command has been largely replaced with simple Copy/Paste. For example, to 'export' the data values for any plotted indicator, select the plot in a chart, Copy, then Paste into a spreadsheet or other program.