



ProTA Mobile User Manual

For iOS

BeeSoft

© 2020, BeeSoft

Contents

Legal_____ **3**

Getting Started_____ **4**

Charting Screen_____ **6**

Settings Screen_____ **14**

Legal

License Agreement and Disclaimer

Read the following before using this software. If you do not agree to the terms and conditions in this agreement, promptly delete the software and contact the developer for a refund.

By using this software you agree to the following terms and conditions:

- BeeSoft retains title to and ownership of all the products contained herein.
- You may not re-sell or transfer your rights without the express written permission of BeeSoft.
- You may install the software on multiple computers if you are primary user of said computers.

BeeSoft warrants that the enclosed programs will perform generally in compliance with the included documentation but BeeSoft does not warrant that the program and manuals are free from all programming bugs, errors, or omissions.

The user will assume the entire risk of using the programs. Any liability will be limited exclusively to the replacement of the product or a refund of the original purchase price. In no event will BeeSoft be liable to you for damages, including any loss of profits, lost revenues, lost savings, lost data, or any other incidental or consequential damages arising out of the use of the program.

Even though BeeSoft has tested the software and reviewed the documentation, BeeSoft makes no warranty or representation, either expressed or implied, with respect to software, its quality, performance, merchantability, or fitness for a particular purpose. As a result, this software is provided "as-is," and you, the purchaser, are assuming the entire risk as to the quality and performance.

The products contained in this package are proprietary products of BeeSoft and are protected by international copyright law. All rights reserved.

The Yahoo! Finance data is to be used for PERSONAL USE ONLY. As of this writing, the Yahoo terms of service forbid commercial redistribution of data you obtain via Yahoo! Finance.

Quoting section 12. of the Yahoo Terms of Service (<https://policies.yahoo.com/us/en/yahoo/terms/utos/index.htm>):

You agree not to reproduce, duplicate, copy, sell, trade, resell or exploit for any commercial purposes, any portion or use of, or access to, the Yahoo Services.

Trademarks

ProTA is a trademark of BeeSoft. macOS, iOS, Safari are trademarks of Apple Computer, Inc. Yahoo! is a trademark of Yahoo!, Inc. All other products and logos mentioned in this documentation are trademarks of their respective owners.

Getting Started

Welcome

Thank you for selecting ProTA!

ProTA (pronounced Pro – Tee – A) is a market charting and technical analysis platform written exclusively for macOS and iOS. ProTA was designed from the ground up to take full advantage of the elegant Apple interfaces. A combination of modern programming techniques, compliant interface design, and close attention to our customers' feedback has resulted in software that truly represents the state-of-the-art in Apple-based investment software.

- **ProTA for macOS desktop is your main testing and authoring tool.**

Please visit <https://www.beesoft.net> to download the latest free macOS desktop application.

- **ProTA Mobile for iOS is a companion to your ProTA desktop software.**

Please visit the Apple App Store on your Apple mobile devices to download the free companion ProTA Mobile apps for iPhone and iPad.

Free Trial Mode

Both applications can be used in a free Trial mode indefinitely and both applications can be used independently of the other. In Free Trial Mode, ProTA Mobile is limited to 20 ticker symbols and is limited to using the charts and templates built into the app. iCloud Sync is disabled in Trial Mode.

When you are ready to take control and make more informed trades, a single Activation Code available at <https://www.beesoft.net> unlocks all ProTA features on all devices for the most expansive Apple-based charting and custom analysis experience.

About This Manual

ProTA Mobile for iOS is a companion to your ProTA desktop software and is the subject of this User Manual. Please see the separate 250 page ProTA macOS User Manual for your desktop software.

Appearance mode for iOS can be selected in the Settings app under the Display & Brightness tab.

ProTA fully supports both Light and Dark Appearance modes throughout out the app.



For simplicity and consistency, this manual uses Light mode images to illustrate features.

Tip. You can access this manual from within ProTA Mobile by clicking the gear widget in any charting Toolbar, then tapping **App Settings**.

Charting Screen

Overview

The primary ProTA Mobile charting screen can be toggled between Landscape or Portrait viewing mode by rotating the device.

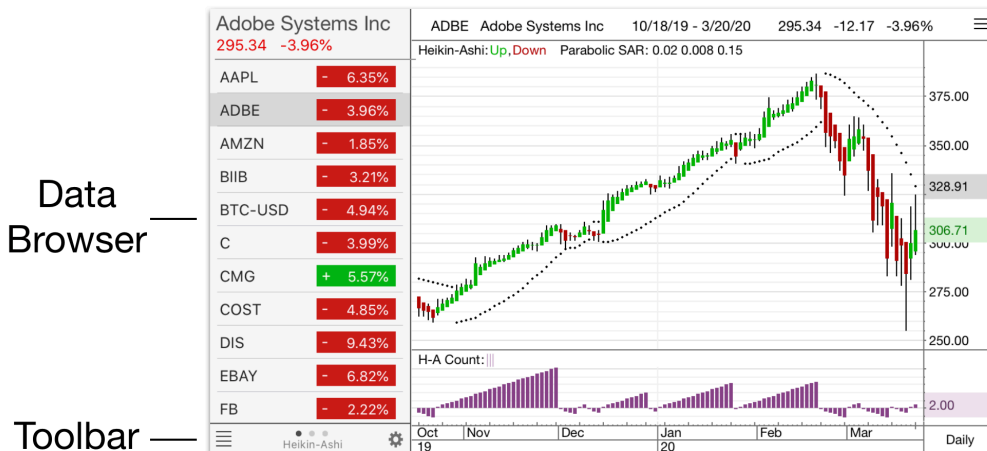
Both viewing modes are divided into three distinct sections described below:



— Chart

— Data Browser

— Toolbar



Data Browser

Toolbar

— Chart —

Data Browser

The **Data Browser** displays tabular information for each of the tickers in your ProTA database.

Data Browser can be toggled between three display modes by swiping left or right in the **Data Browser** itself or in the **Toolbar** below it. The 3-dot page indicator in the **Toolbar** helps to let you know which display mode you currently viewing.



Quotes Table — **News Headlines** — **Fundamental Data**

Quotes Table

The **Quotes Table** displays sorted price information for each of the tickers in your ProTA database.

Adobe Systems Inc	
295.34	-3.96%
AAPL	- 6.35%
ADBE	- 3.96%
AMZN	- 1.85%
BIIB	- 3.21%
BTC-USD	- 4.94%
C	- 3.99%
CMG	+ 5.57%
COST	- 4.85%
DIS	- 9.43%
EBAY	- 6.82%
FB	- 2.22%

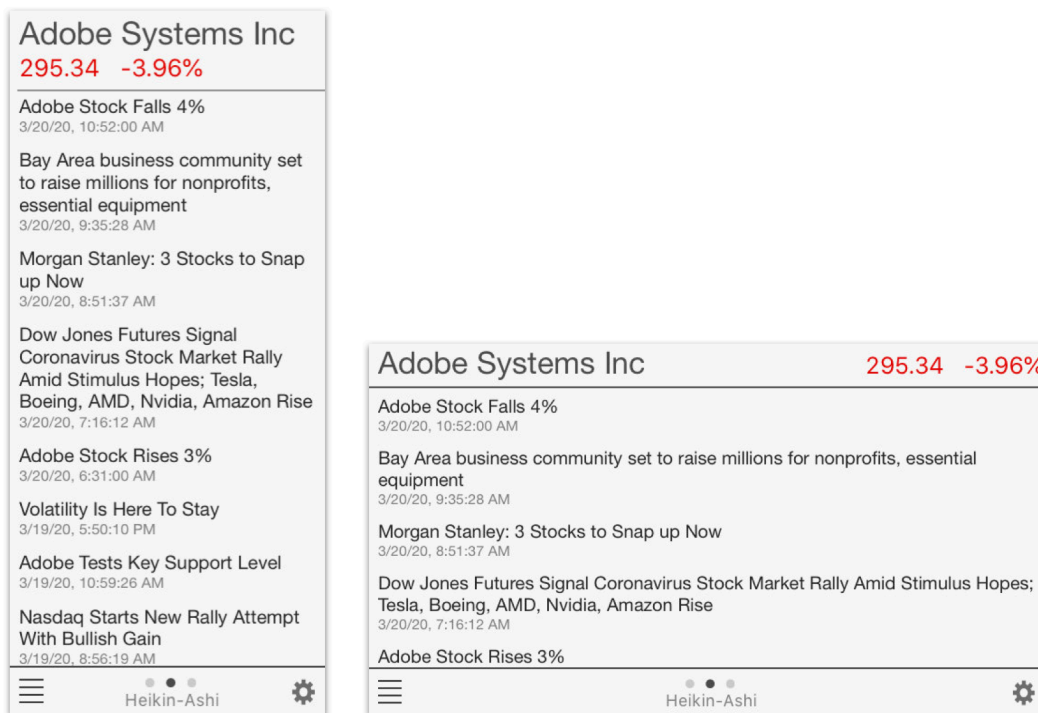
Adobe Systems Inc			295.34	-3.96%
AAPL	229.24	-15.54	- 6.35%	
ADBE	295.34	-12.17	- 3.96%	
AMZN	1,846.09	-34.84	- 1.85%	
BIIB	278.77	-9.25	- 3.21%	
BTC-USD	5,885.08	-306.11	- 4.94%	
C	38.06	-1.58	- 3.99%	

Quotes Table (with Toolbar and 3-dot page indicator beneath)

- Tap any row to select a ticker and display its associated chart.
- Swipe up and down to scroll the list.
- Swipe left and right to page into the **Fundamental Data** or **News Headlines** modes.
- The values displayed in the table as well as the sort order can be configured in **App Settings**, accessible via the **Gear** widget in the **Toolbar** (see separate **Settings Screen** chapter).

News Headlines

News Headlines displays the most recent real-time news stories related to the selected ticker.



News Headlines (with Toolbar and 3-dot page indicator beneath)

- Tap any headline to view the entire story. After reading the story, tap the left-arrow-back button in the upper-left of the screen to return to the **News Headlines** view in ProTA.
- Swipe up and down to scroll the list.

- Swipe left and right to page into the **Quotes Table** or **Fundamental Data** modes.

Fundamental Data

Fundamental Data displays recent fundamental values for the selected ticker such as EPS and P/E Ratio.

Adobe Systems Inc	
295.34 -3.96%	
P/E Ratio	44.76
PEG Ratio	1.78
Price/Sales	12.24
Price/Book	13.60
EPS	6.60
EPS Forward Est.	11.21
Book Value	21.71
1 Year Target	342.79
Revenue	11.66 B
EBITDA	4.08 B
Market Cap	142.73 B
Short Ratio	1.60
Float	480.18 M
Shares Outstanding	483.27 M
Dividend	-
Updated: Today	

Adobe Systems Inc		295.34 -3.96%	
P/E Ratio	44.76	Price/Sales	12.24
PEG Ratio	1.78	Price/Book	13.60
EPS	6.60	Book Value	21.71
EPS Forward Est.	11.21	1 Year Target	342.79
Revenue	11.66 B	EBITDA	4.08 B
Market Cap	142.73 B	Short Ratio	1.60
Shares Outstanding	483.27 M	Float	480.18 M
Dividend	-	Updated: Today	

Fundamental Data (with Toolbar and 3-dot page indicator beneath)

- Swipe left and right to page into the **News Headlines** or **Quotes Table** modes.

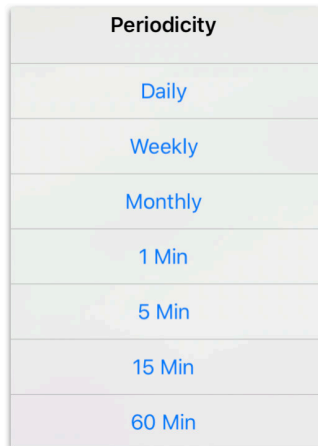
Chart

Each row (ticker) in a Chart Suite's **Quotes Table** will display an associated **Chart**.

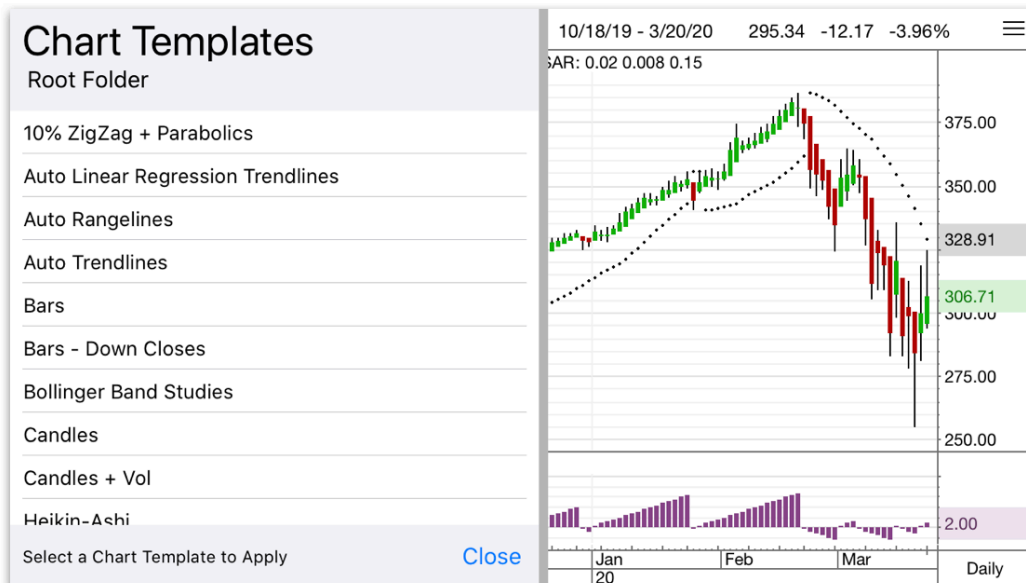


- Pinch to zoom the chart spacing in and out.
- Drag left or right on the Time (X) Axis to scroll the chart forward or backward in time.
- Swipe up or down to advance to the next/previous ticker in the list.

- Tap the Periodicity box in the lower-right (in the above image, it says “Daily”) to change the Periodicity:



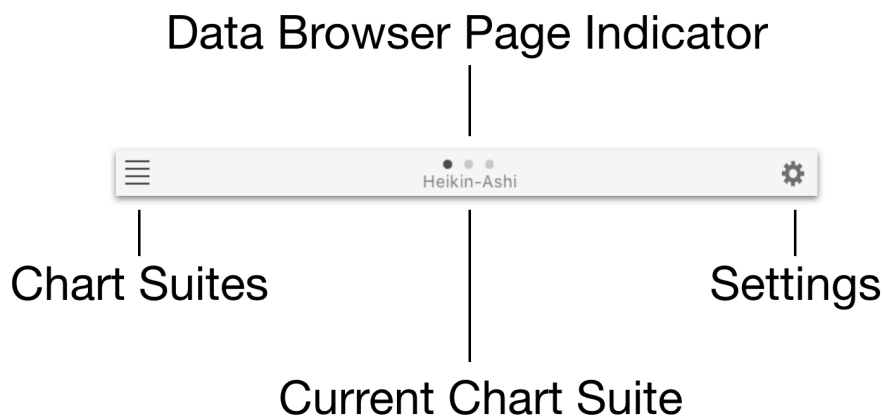
- Tap the Templates icon in the upper-right (3 horizontal lines) to select a new template to display in the chart. The Templates file browser will slide out from the left of the screen:



- Tap any row to apply the Template to the chart.
- Swipe up and down to scroll the list.

Toolbar

The **Toolbar** is always present at the bottom of the screen below the **Data Browser**.



In the middle, the name of the currently active Chart Suite is displayed below the 3-dot page indicator.

Note. When a ProTA data refresh is taking place, the Chart Suite name is temporarily replaced with a spinning progress indicator.

- Tap to the left or right of the 3-dot page indicator (or swipe left or right) to page between the three **Data Browser** display modes.
- Tap the gear widget at the right to administer various app settings (see the **Settings Screen** chapter).
- Tap the Chart Suites button at the left to select another, previously saved, suite of charts to work with. The Chart Suites file browser will slide out from the left of the screen:



- Tap any row to open and make active the selected Chart Suite file.
- Swipe up and down to scroll the list.

Settings Screen

Overview

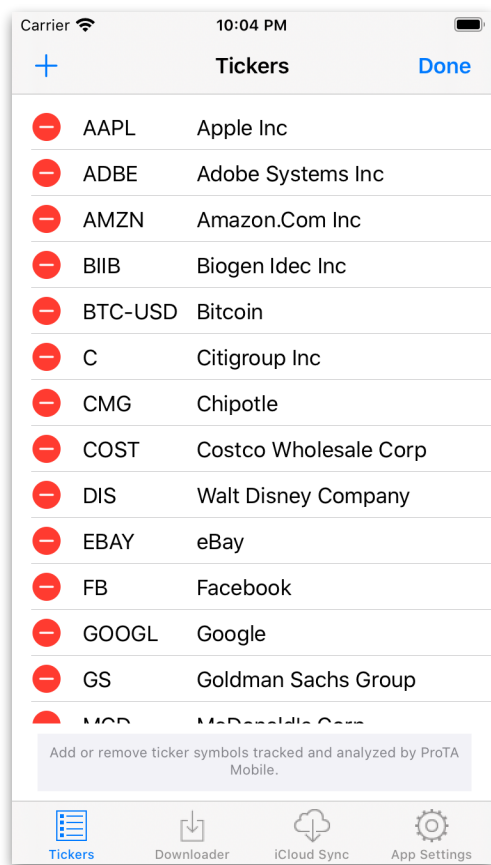
Tapping the gear widget in the lower-right of any **Toolbar** reveals the ProTA **Settings Screen**.

App administration can be addressed by tapping any of the four tabs at the bottom of the screen.

Tickers - **Downloader** - **iCloud Sync** - **App Settings**

Tickers

The **Tickers** tab is a listing of the tickers you are currently tracking with ProTA Mobile.



- Tap the red deletion button to remove a ticker from your mobile database.
- Tap the + button in the upper-left to add a new ticker to your mobile database.
- Tap **Done** to return to the Charting Screen.

Note. While ProTA for desktop can track an unlimited number of tickers, ProTA Mobile is limited to 100 tickers (20 while in Free Trial Mode).

Downloader

Yahoo! Finance tracks just about every traded stock, fund and many market indexes in the United States as well as dozens of foreign exchanges. Pricing histories are available providing decades of past data.

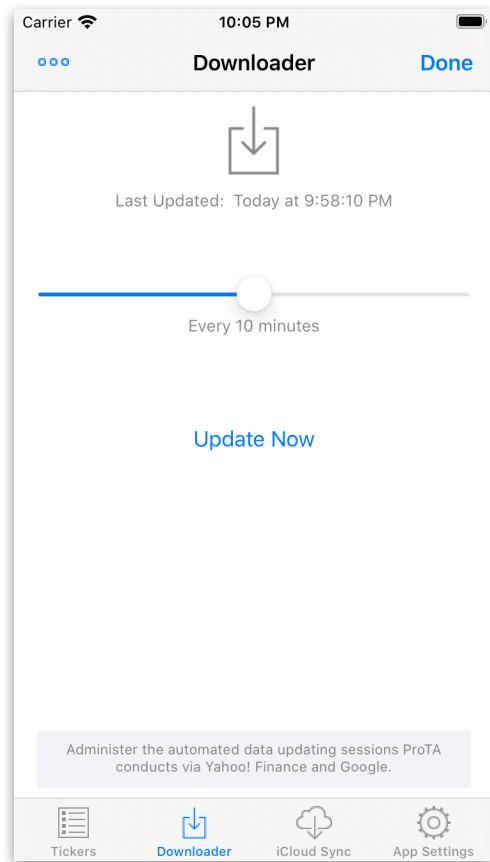
ProTA Mobile includes a fully automated interface to Yahoo! Finance for Historical data downloading as well as for Intraday prices. Once you have added tickers to the **Tickers** tab (see above), ProTA Mobile will automatically take of the data acquisition for you.

Legal Notice

The Yahoo! Finance data is to be used for PERSONAL USE ONLY. As of this writing, the Yahoo terms of service forbid commercial redistribution of data you obtain via Yahoo! Finance.

Quoting section 12. of the Yahoo Terms of Service (<https://policies.yahoo.com/us/en/yahoo/terms/utos/index.htm>):

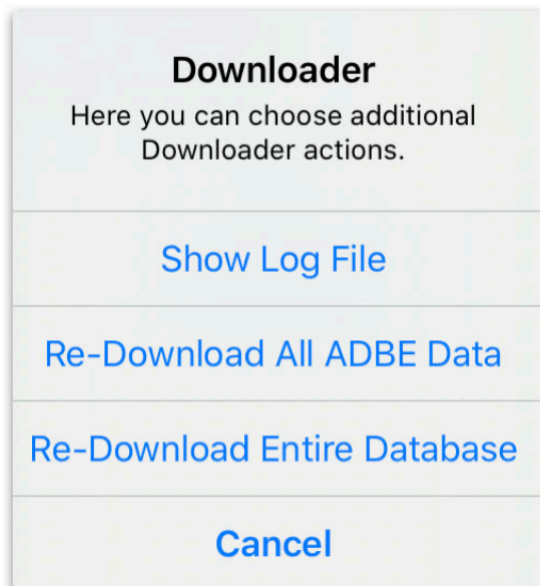
You agree not to reproduce, duplicate, copy, sell, trade, resell or exploit for any commercial purposes, any portion or use of, or access to, the Yahoo Services.



- Use the slider to determine how often ProTA Mobile will automatically refresh with current prices. Slide completely left to disable data downloading.

Note. ProTA does **not** update data while the app is in the background. Automated data refreshing will only take place when ProTA is the current, running app.

- Tap **Update Now** to immediately refresh your database.
- Tap the . . . button in the upper-left for additional trouble-shooting related features:



- Tap **Show Log File** to display a summary and error log for the most recent Download sessions ProTA has performed.
- Tap **Re-Download All <Ticker> Data** to clear out all data for the specified ticker and re-acquire the full history from Yahoo! Finance.
- Tap **Re-Download Entire Database** to clear out all data for all tickers and re-acquire the full histories from Yahoo! Finance.
- Tap **Done** to return to the Charting Screen.

iCloud Sync

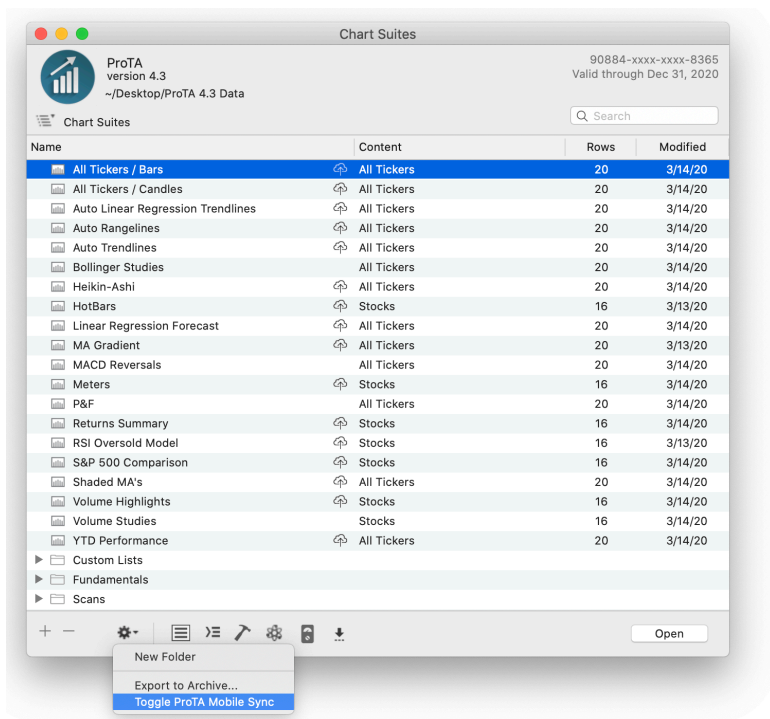
The ProTA market analysis platform consists of a powerful macOS-based desktop application as well as companion mobile apps for iPhone and iPad.

Use ProTA desktop as your main testing and authoring tool, then sync your important desktop Chart Suites and analysis to ProTA Mobile via your Apple iCloud.

To preserve bandwidth and memory usage, you will choose the specific Chart Suites and the specific tickers to be copied from ProTA desktop to your ProTA Mobile apps.

Step 1 - Chart Suite Selection (ProTA macOS)

- Choose Open Chart Suite (command-O) from the File menu.



- Select any row or rows and then choose Toggle ProTA Mobile Sync from the popup gear widget menu at the bottom. Charts Suites that will sync to iCloud are indicated with a cloud/up arrow icon on each row.

Tip. This step is only required the first time you specify which Chart Suites to sync. The iCloud icon will persist on each row unless you disable it by again choosing the **Toggle ProTA Mobile Sync** command.

Step 2 - Ticker Selection and Uploading (ProTA macOS)

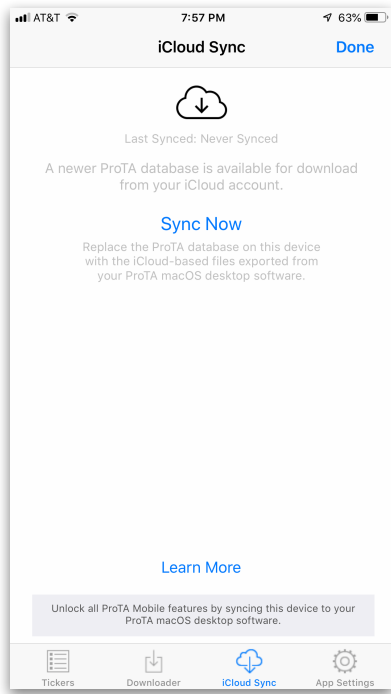
- Choose ProTA Mobile Sync from the Tools menu.



- If necessary, click the Tickers button to select which tickers (up to 100) to include in the sync.
- Click the Upload Now button to begin the upload. Progress and success is reported in the window.

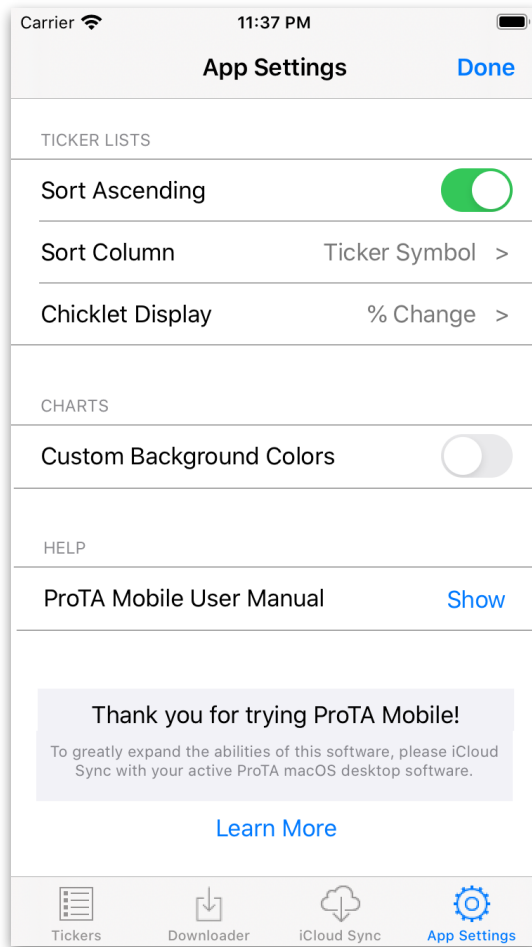
Step 3 - ProTA Mobile App: iCloud Sync

- In your ProTA Mobile app, tap the gear widget to see the **Settings Screen** then tap the iCloud Sync tab.



- Tap Sync Now to download your files from iCloud to your device. Re-launch ProTA to work with your synced files.

App Settings



Ticker Lists

- Tap the controls at the right to control the sort order and display in **Data Browser Quotes Tables**.

Charts

- By default, ProTA will color the background of your charts to match the iOS Light or Dark appearance you've chosen in the Settings app. If you prefer to use the native chart background colors as they were saved into the various Chart Suite files, enable this control.

Help

- Tap the **Show** button to see this **ProTA Mobile User Manual** on your device.